



VANGUARD VME Bus Analyzer

Installation Guide

Document No. A-T-MI-BAVME###-A-0-A2

TABLE OF CONTENTS

1 TECHNICAL SUPPORT	1-3
1.1 Technical Documentation and Contact Information	1-3
1.2 Ordering Process	1-3
1.3 Quality Assurance	1-4
2 INSPECTION	2-3
2.1 Before Beginning	2-3
2.2 Precautions in Handling and Storage	2-3
3 CONFIGURATION and INSTALLATION	3-3
3.1 VME Board Layout	3-3
3.2 Installing the Hardware	3-4
3.3 Power Consumption	3-5
3.4 Installing the Software	3-5
4 CONNECTING to the VANGUARD	4-3
4.1 Connecting via Ethernet	4-3
4.2 Connecting via USB Cable	4-3
5 STARTING BUSVIEW	5-3
6 TROUBLESHOOTING	6-3
6.1 Connection Problems	6-3
6.2 USB Related Problems	6-3
6.3 Windows Firewall Issues	6-3
6.4 BusView Problems	6-3
6.5 General Problems	6-3
7 ACCESSORIES	7-3
7.1 Vanguard Cables and Accessories	7-3

The information in this document is subject to change without notice and should not be construed as a commitment by Curtiss-Wright (CW). While reasonable precautions have been taken, CW assumes no responsibility for any errors that may appear in this document.

Trademarks

Trademarked names appear throughout this document. Rather than list the names and entities that own the trademarks or insert a trademark symbol with each mention of the trademarked name, we hereby state that the names are used only for editorial purposes and to the benefit of the trademark owner with no intention of improperly using the trademark. The mention of any trademarked name is not intended to imply that CW products are affiliated, endorsed or sponsored by such trademark owner.

Software and Firmware Licensing

Any Software and Firmware code provided by CW described herein is proprietary to CW or its licensors. The use of this Software and Firmware is governed by a licensing agreement included on the media on which the Software and Firmware was supplied. Use of the Software or Firmware assumes that the user has agreed to the terms of the licensing agreement. CW retains all rights to the Software and Firmware under the copyright laws of the United States of America and other countries. This Software or Firmware may not in contravention of the licensing agreement be furnished or disclosed to any third party and may not be copied or reproduced by any means, electronic, mechanical, or otherwise, in whole or in part, without specific authorization in writing from CW.

Limited Liability

CW does not assume any liability arising out of the application or use of any product described herein; neither does it convey any license under its patent rights nor the rights of others. CW products are not designed, intended, or authorized for use as components in systems intended to support or sustain life, or for any application in which failure of the CW product could create a situation where personal injury or death may occur. Should the Buyer purchase or use CW products for any such unintended or unauthorized application, Buyer shall indemnify and hold CW and its officers, employees, subsidiaries, affiliates, and distributors harmless against all claims, costs, damages, and expenses, and reasonable attorney fees arising out of, directly or indirectly, any claim of personal injury or death associated with such unintended or unauthorized use, even if such claim alleges that CW was negligent regarding the design or manufacture of the part.

Any reference made within this document to equipment from other vendors does not constitute an endorsement of their product(s).

Revised: May 8, 2017

Curtiss-Wright Defense Solutions
2600 Paramount Place Suite 200
Fairborn, OH 45324-6763 USA
(800) 252-5601(U.S. only)
(937) 252-5601



VANGUARD Bus Analyzer

1 TECHNICAL SUPPORT

1.1 Technical Documentation and Contact Information

Technical documentation is provided with all of our products. This documentation describes the technology, its performance characteristics, and includes some typical applications. It also includes comprehensive support information, designed to answer any technical questions that might arise concerning the use of this product. We also publish and distribute technical briefs and application notes that cover a wide assortment of topics. Although we try to tailor the applications to real scenarios, not all possible circumstances are covered.

While we have attempted to make this document comprehensive, you may have specific problems or issues this document does not satisfactorily cover. Our goal is to offer a combination of products and services that provide complete, easy-to-use solutions for your application.

If you have any technical or non-technical questions or comments, contact us. Hours of operation are from 8:00 a.m. to 5:00 p.m. Eastern Standard/Daylight Time.

- Phone: (937) 252-5601 or (800) 252-5601
- E-mail: DTN_support@curtisswright.com
- Fax: (937) 252-1465
- World Wide Web address: www.cwcddefense.com

1.2 Ordering Process

To learn more about Curtiss-Wright Defense Solutions' products or to place an order, please use the following contact information.

- E-mail: DTN_info@curtisswright.com
- World Wide Web address: <http://www.cwcddefense.com/>

To contact a local Curtiss-Wright sales representative go to: <http://www.cwcddefense.com/sales.html> and point to your location on the map presented, then click on the pop-up with the sales representative's name.

1.3 Quality Assurance

Curtiss-Wrights' Corporate policy is to provide our customers with the highest quality products and services. In addition to the physical product, the company provides documentation, sales and marketing support, hardware and software technical support, and timely product delivery. Our quality commitment begins with product concept, and continues after receipt of the purchased product.

Curtiss-Wright's Quality System conforms to the ISO 9001 international standard for quality systems. ISO 9001 is the model for quality assurance in design, development, production, installation and servicing. The ISO 9001 standard addresses all 20 clauses of the ISO quality system, and is the most comprehensive of the conformance standards.

Our Quality System addresses the following basic objectives:

- Achieve, maintain, and continually improve the quality of our products through established design, test, and production procedures.
- Improve the quality of our operations to meet the needs of our customers, suppliers, and other stakeholders.
- Provide our employees with the tools and overall work environment to fulfill, maintain, and improve product and service quality.
- Ensure our customer and other stakeholders that only the highest quality product or service will be delivered.

The British Standards Institution (BSI), the world's largest and most respected standardization authority, assessed Curtiss-Wright's Quality System. BSI's Quality Assurance division certified we meet or exceed all applicable international standards, and issued Certificate of Registration, number FM 31468, on May 16, 1995. The scope of Curtiss-Wright's registration is: "Design, manufacture and service of high technology hardware and software computer communications products." The registration is maintained under BSI QA's bi-annual quality audit program.

Customer feedback is integral to our quality and reliability program. We encourage customers to contact us with questions, suggestions, or comments regarding any of our products or services. We guarantee professional and quick responses to your questions, comments, or problems.

**CURTISS -
WRIGHT**

VANGUARD Bus Analyzer

2 INSPECTION

2.1 Before Beginning

Make sure that the Vanguard you have received is according to your purchase order with respect to model.

The Vanguard package consists of the following:

- Installation Guide (this document).
- Busview® CD-ROM with License Key (Authorization Code).
- The Vanguard VME assembly inside an anti-static bag.
- A Trigger Output cable with BNC Coax connector (4945-K-24).
- 8 patch leads of various colors for pin header I/O and 4 micrograbber test clips (401-VG-TL).
- External Temperature Probe (401-VG-ETS).
- USB cable (401-VG-USB).
- Ethernet Cable (401-VG-ETH).



WARNING: Check that the SAM and optional Exerciser are properly seated.



NOTE: You should also inspect the board to verify that no mechanical damage has occurred. Please report any discrepancies or damage to your distributor or to Curtiss-Wright immediately.

2.2 Precautions in Handling and Storage



Static electricity can permanently damage your Vanguard.
Prevent electrostatic damage by taking proper precautions.

- Make sure your body is grounded when coming into contact with the board by wearing an anti-static wrist strap.
- If an anti-static wrist strap is not available, touch a grounded surface, such as the bare metal chassis, before touching the Vanguard.
- Only leave the board on surfaces with controlled static characteristics, i.e. specially designed anti-static table covers.
- When handing the board to another person, first touch this person's hand, wrist etc. to discharge any static potential.
- Always store the board in an anti-static bag or other static resistant container.
- If an electric screwdriver is used, it should be grounded and shielded to prevent sparks.



VANGUARD Bus Analyzer

3 CONFIGURATION and INSTALLATION

3.1 VME Board Layout

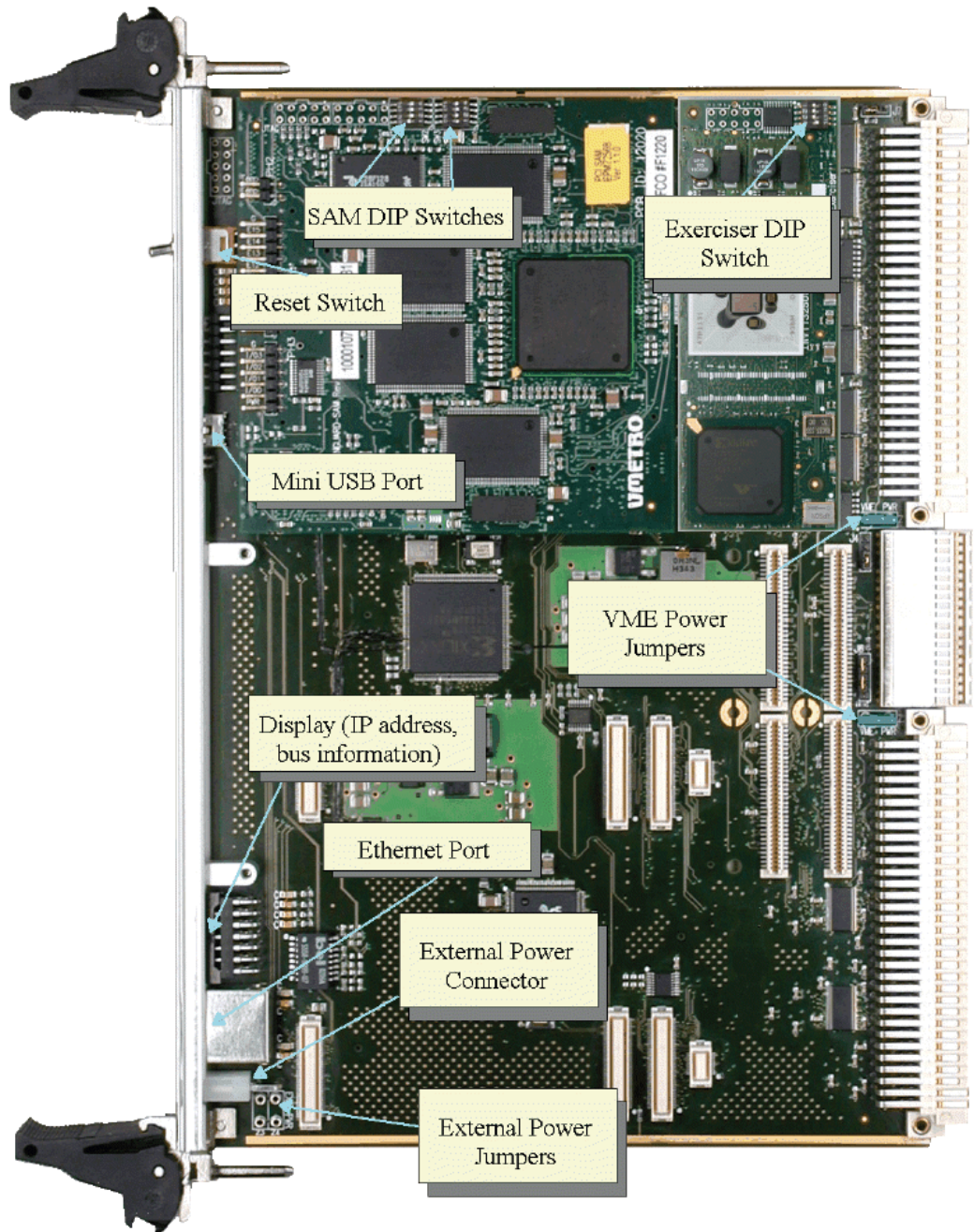


Figure 3-1 Vanguard VME Board Layout

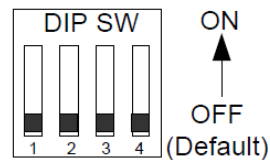
3.2 Installing the Hardware

Slot Selection

- The Vanguard can be installed in any slot in a VME rack, however the Vanguard can only be used as a system controller if the Exerciser module (optional) is present.
- It is recommended that the Vanguard is located as far to the left (closest to slot 1) as possible. This will ensure that the Bus Grants (BG3-0IN/OUT*) and IACKIN/OUT* daisy-chains pass the Vanguard and can be captured by the Analyzer.

Default Configuration

Before installing the Vanguard, ensure that all SAM DIP switches indicated in Figure 3-1 are in the default ‘off’ position.



Exerciser DIP Switch

If you have purchased the Exerciser option, then the Exerciser module will already be mounted onto the VME carrier board.

The DIP switch located on the Exerciser module is factory shipped with:

- Switch 3 ON ; meaning SYSRES* and SYSFAIL* are disabled at power-up.
- Switch 4 OFF (Auto System Controller disabled); meaning that the Vanguard VME Exerciser will not act as system controller

For more details about the Exerciser DIP switch settings see the User Guide.



WARNING: Do not install the board into a powered system!

Insertion the Vanguard VME

1. Ensure the power is disconnected to the system in which the Vanguard is to be installed.
2. Wear an anti-static wrist strap or follow the instructions in the “Precautions in Handling and Storage” section.
3. Remove the Vanguard from its anti-static bag and hold it by the brackets only.
4. Release the ejection levers from their locked position and slide the Vanguard VME into the selected slot using firm steady pressure to seat the board in the connectors properly.
5. Push the upper lever down and the lower lever up to lock the board into position.

3.3 Power Consumption

It is important to make sure that the power supply has sufficient capacity to power the board. Power consumption is dependent on operating mode. See Table 3-1.

Table 3-1 Power consumption, Vanguard 3.3 V

Min(Idle)	Max
1.52A Without Exerciser	1.68A State mode without Exerciser
1.52A Without Exerciser	2.78A 133MHz Timing Mode without Exerciser
2.12A With Exerciser	4.0A 133MHz Timing Mode with Exerciser

3.4 Installing the Software

System Requirements

- Computer with Pentium 800 MHz or higher processor; Pentium IV recommended.
- 256 MB RAM recommended (64 MB minimum supported; may limit performance).
- CD-ROM drive.
- Super VGA (1024x768) or higher resolution is recommended.
- Windows 7, Windows 8, or Windows 10 operating system.
- Minimum of 1 GB of free hard disk space.
- USB port or Ethernet network.

Installing Bus View

1. Insert the CD-ROM into the CD-ROM drive.
2. If the installation program does not start automatically, run the file Setup.exe on the BusView CD-ROM.
3. Follow the instructions given by the Installation Wizard.
4. When the installation is finished, the BusView icon will be found on the desktop and in the Windows Start menu.



NOTE: License Agreement: By selecting “I accept the terms of the license agreement” and clicking Next, you agree to and accept the terms stated.

**CURTISS -
WRIGHT**

VANGUARD Bus Analyzer

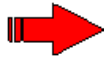
4 CONNECTING to the VANGUARD

4.1 Connecting via Ethernet

BusView can communicate with the Vanguard using an Ethernet or a USB (Universal Serial Bus) connection.

Before starting Busview do the following:

- **DHCP:** If your network includes a DHCP server, then the Vanguard is listed in the Device Information window after BusView is started.
- **STATIC IP:** If the Vanguard is not listed, or if your network does not use a DHCP server, see “Getting Started with BusView®” in the Vanguard User Guide for instructions on how to configure your Vanguard with a static IP address. If your Vanguard model has a display, it will show the IP address of the Vanguard once connected via a network.



NOTE: A Crossover Ethernet cable (not supplied) is required if you are connecting to the Vanguard Ethernet port directly from your PC

4.2 Connecting via USB Cable

1. Connect a USB cable from the USB port on the front panel of your Vanguard to a free USB port on your PC.
2. Once connected, let the “New Hardware Wizard” install the necessary drivers automatically. If the New Hardware Wizard does not start, you can start it manually as follows: Click Start, Control Panel, select ‘System & Maintenance’, select ‘Device Manager’. In Device Manager, select Action then Scan for hardware changes (may require administrator privileges).
3. The operating system may ask you to confirm the driver because it has not been digitally signed by Microsoft. Choose accept.

If a driver cannot be found, refer to the “Troubleshooting” section. Once the driver is installed, BusView is ready to communicate with your Vanguard.


**CURTISS -
WRIGHT**

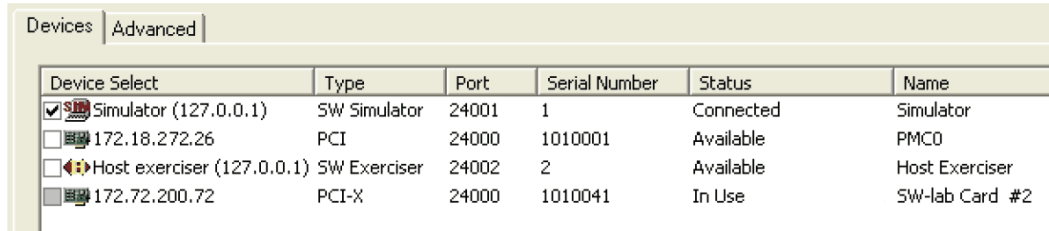
VANGUARD Bus Analyzer

5 STARTING BUSVIEW

Start BusView by double-clicking on the BusView icon on the desktop.

1. BusView will begin by performing a scan to find available connections and will display these in the Device Information dialog box.

The scan can be started manually by selecting “Hardware Connection” from the “Tools” menu or by pressing the Scan button  from the toolbar.



Device Select	Type	Port	Serial Number	Status	Name
<input checked="" type="checkbox"/> Simulator (127.0.0.1)	SW Simulator	24001	1	Connected	Simulator
<input type="checkbox"/> 172.18.272.26	PCI	24000	1010001	Available	PMCO
<input type="checkbox"/> Host exerciser (127.0.0.1)	SW Exerciser	24002	2	Available	Host Exerciser
<input type="checkbox"/> 172.72.200.72	PCI-X	24000	1010041	In Use	SW-lab Card #2

Figure 5-1 Device Information Dialog

2. Select the required device and click OK.
3. You may be prompted for a license key. This can be found on the DVD case.
4. BusView should now automatically connect to the Vanguard. Connection status is shown in the Status window.

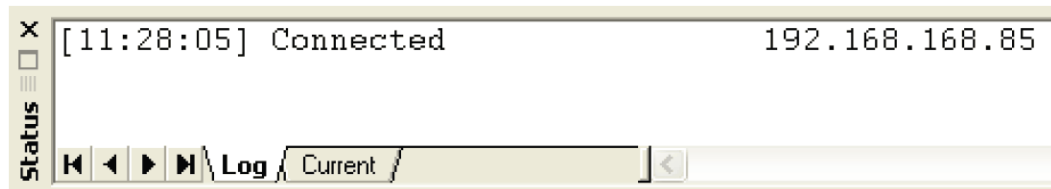


Figure 5-2 Connection Status

**CURTISS -
WRIGHT**

VANGUARD Bus Analyzer

6 TROUBLESHOOTING

6.1 Connection Problems

There are several reasons why a connection attempt may fail, but incorrect cabling and communication settings are the most common.

- Reset the Vanguard by pressing the Reset button on the front panel and try connecting manually by entering its IP address in the Advanced tab of the Device Information dialog box.
- Check that the Vanguard is booting by performing the following test:
 1. Remove all cabling from the Vanguard.
 2. Press the Reset button on the front panel of the Vanguard.
 3. Once the Vanguard has booted, the green LED on the Vanguard should flash slowly and the dot matrix display (if available) will show `IP: Invalid`. If this is not the case, then the analyzer is not booting due to a hardware malfunction or insufficient power.
- Verify that the cables used are the correct ones and not damaged.
- Check that the PC runs a compatible version of Windows (**Windows XP, Windows Vista, or Windows 7**).

6.2 USB Related Problems

- Is the USB driver properly installed? The driver should be installed automatically when Windows detects the Vanguard as a new USB device. Follow the instructions from the Windows driver installation Wizard. If Windows fails to locate the USB driver, direct the New Hardware Wizard to the following directory on the BusView CD-ROM:
`Drivers/x32` (for 32 bit operating system)
`Drivers/x64` (for 64 bit operating system)
- Try using a different USB device (Such as a mouse or keyboard), to verify that the USB port is functioning properly. If not, check that USB is enabled in the BIOS.

6.3 Windows Firewall Issues

When BusView is started for the first time (per user), you may be asked if BusView network traffic should be blocked or unblocked. Select 'unblocked'. Failing to do so will result in BusView not being appended to the Windows Firewall exception list, which will result in BusView not being able to see any Vanguard Analyzers on the network.

If 'blocked' is selected, you can add BusView to the exception list by opening the Windows Firewall options and select BusView5 in the Firewall exception list.

6.4 BusView Problems

To begin a new session once BusView has started, right click the appropriate folder in the Workspace window and select New.

Be sure to read the readme.txt file for the latest release information.

6.5 General Problems

- Verify that the software key issued is correct for the modules ordered. You can do this by viewing the Authorization dialog box opened from the Tools menu in BusView.
- **To use the Vanguard hardware without Busview:** See the **readme.txt** file in the Drivers

directory (BusView CD-ROM) for instructions.

**CURTISS -
WRIGHT**

VANGUARD Bus Analyzer

7 ACCESSORIES

7.1 Vanguard Cables and Accessories

Part Number	Description
401-VG-ETH	Ethernet cable.
401-VG-ETS	External Temperature Sensor.
401-VG-USB	USB cable.
401-VG-EPSU	External Power Supply (cable included).
401-325-EPC	External Power Supply cable.
4945-K-24	Square pin receptacle to BNC male cable (0.6m/2ft).
401-VG-TL	8 patch leads of various colors for pin header. I/O, 4 micrograbber test clips.
VG-VE	Exciser Module